



# FSRealistic

Pro v2.0.2

**Captain**, thank you for choosing FSRealistic Pro! Please go ahead and read the manual carefully in order to get the most out of FSRealistic and its features.

## Table of contents

- Compatibility
- Customer support
- Where to find us
- Credits
- VR tips
- Known Issues
- EULA
- How to install
- How to update (also from Core version)
- How to revert from Pro to Core
- How to uninstall
- How to run
- Activation / Trial
- How to use
  - General
  - Effects tab
  - Profile tab
  - Profile cloud
  - Settings tab
- Troubleshoot



## Compatibility

- Windows 10/11
- Microsoft Flight Simulator v1.12.13.0 (World update 2) and above
- Works with any 3rd parties, for issues please report
- VR - Fully compatible apart from UI showing as VR window

## Customer support

If you have any suggestions, comments, or questions, please feel free to contact us anytime at [FSRealistic@gmail.com](mailto:FSRealistic@gmail.com) or visit our [official forum](#) for continuous news and updates.

## Where to find us

- [Website](#)
- [Facebook](#)
- [Forum](#)
- [Linkedin](#)

## Credits

- FSRealistic closed beta group for making this happen.
- Stephan Siebertz for providing the amazing blade slapping effect sounds.

## Known issues

- Cabin ambiance not working with PMDG
- Cabin ambiance can be heard from 5.1 front speakers
- Custom camera views are getting messed up
- VR overall camera movements improvements

## EULA

- You can find FSRealistic EULA under the FSRealistic main folder.
- By using FSRealistic you agree to FSRealistic EULA content.

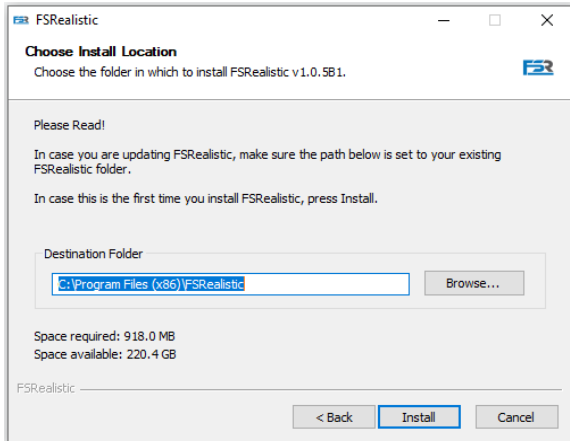
## VR tips

- Disable breathing effect.
- Go to turbulence effect and move range slider to 35 and smoothness slider to 50.



## How to install

- Download FSRealistic Pro installer from the store you purchased it from or from [here](#)
- Double click on the installer file to run in
- Click on “Browse” to select where you want FSRealistic folder to be installed
- Click on “Install”



## How to update (Also relevant for FSRealistic Core users who upgrading)

- Download FSRealistic Pro installer from the store you purchased it from or from [here](#)
- Double click on the installer file to run in
- Click on “Browse” and **select your existing FSRealistic folder (critical step)**
- Click on “Install”

## How to revert from Pro to Core

- Manually delete all files and folders from FSRealistic folder **EXCEPT** to Profiles folder and its content (this step will ensure you will not lose your saved profiles)
- Download FSRealistic Pro installer from the store you purchased it from or from [here](#)
- Double click on the installer file to run in
- Click on “Browse” and **select your existing FSRealistic folder**
- Click on “Install”

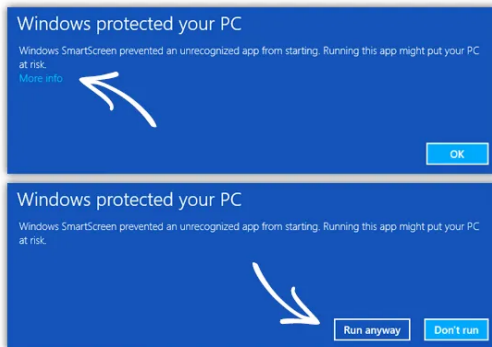
## How to uninstall

- Run FSRealistic uninstall.exe from the FSRealistic folder or via Windows “Add or remove program”.



## How to run

- Press Windows key and type FSRealistic, then press enter
- Some computers may not recognize FSRealistic and show a blue dialog
  - Click on more “More info” and then “Run anyway”



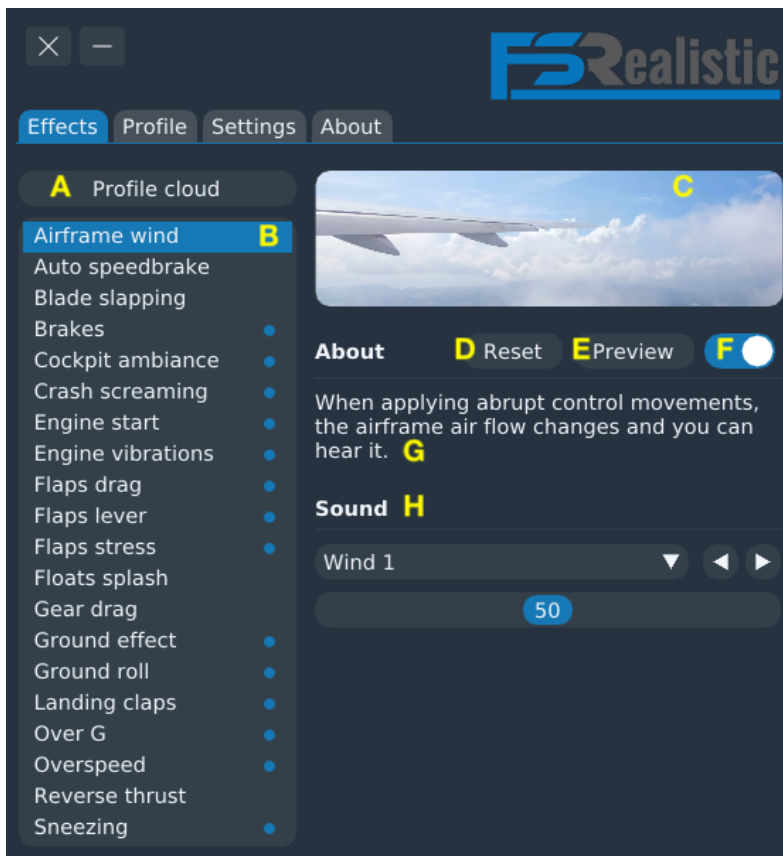
## Activation / Trial

- On the initial run of FSRealistic, you will be offered with two options.
  - **Activate**
    - Choose this option in case you’ve already bought FSRealistic and have a product key.
  - **Trial**
    - FSRealistic comes with a trial mode, which allows anyone to try FSRealistic for free for 7 days.
    - By the end of the trial period, if you liked FSRealistic and wish to keep it, you’ll have to purchase a product key.

## How to use - General

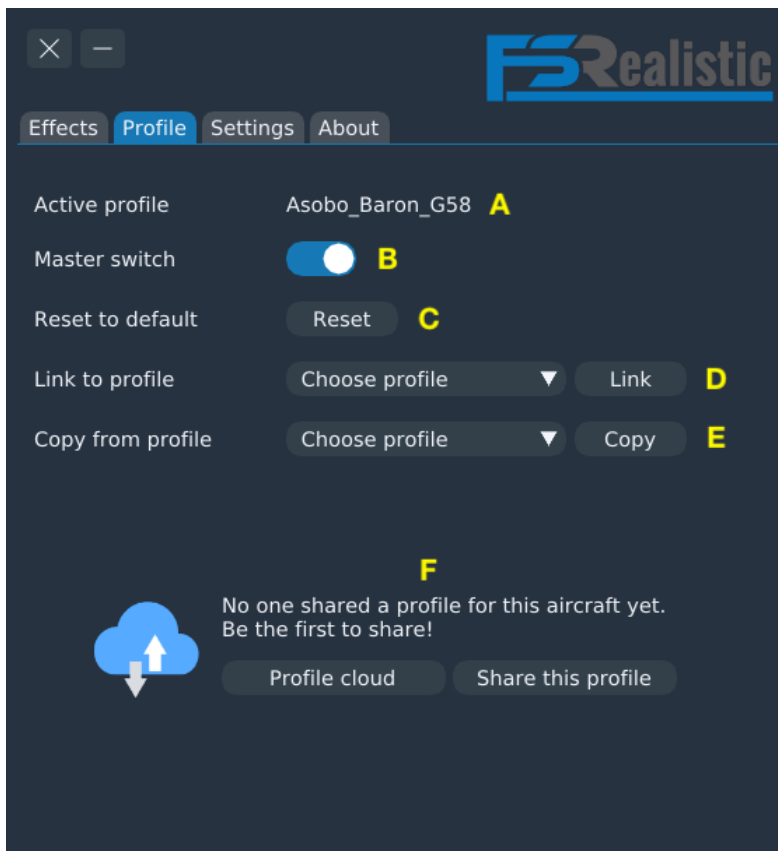
- Make sure MSFS and FSRealistic are running.
- Once you will start a flight, FSRealistic will present the effects list and options.
- By default, FSRealistic is enabled for any aircraft that is loaded for the first time using one of our default profiles according to the type of the aircraft.
  - Piston engine
  - Turboprop
  - Jet
  - Seaplane
  - Glider
  - Helicopter
- From that point you can adjust the effects as you wish and all adjustments will be automatically saved into the aircraft profile.
- At any point, you can reset to the default profile by going to the “Profile” tab and pressing on the “Reset” button.
- Once you are done adjusting the effects, FSRealistic can be minimized.
- **Enjoy your flight.**

## Tabs - Effects



- **A** - Profile cloud button, where you can find others shared profiles.
- **B** - List of effects, a blue dot next to an effect means it is enabled.
- **C** - An image to illustrate the effect.
- **D** - Reset button which will reset only this effect to default.
- **E** - Preview button which will preview this effect for tweaking purposes.
- **F** - Effect on off toggle.
- **G** - Short description of this effect.
- **H** - In this section you will be able to adjust the effect sliders.
  - Movement
    - This slider will control the camera movement intensity.
    - To disable this movement, move the slider all the way to the left.
  - Sound
    - The combo box is where you select the sound you want.
    - The slider is where you set its volume.
    - To disable this sound, move the slider all the way to the left.

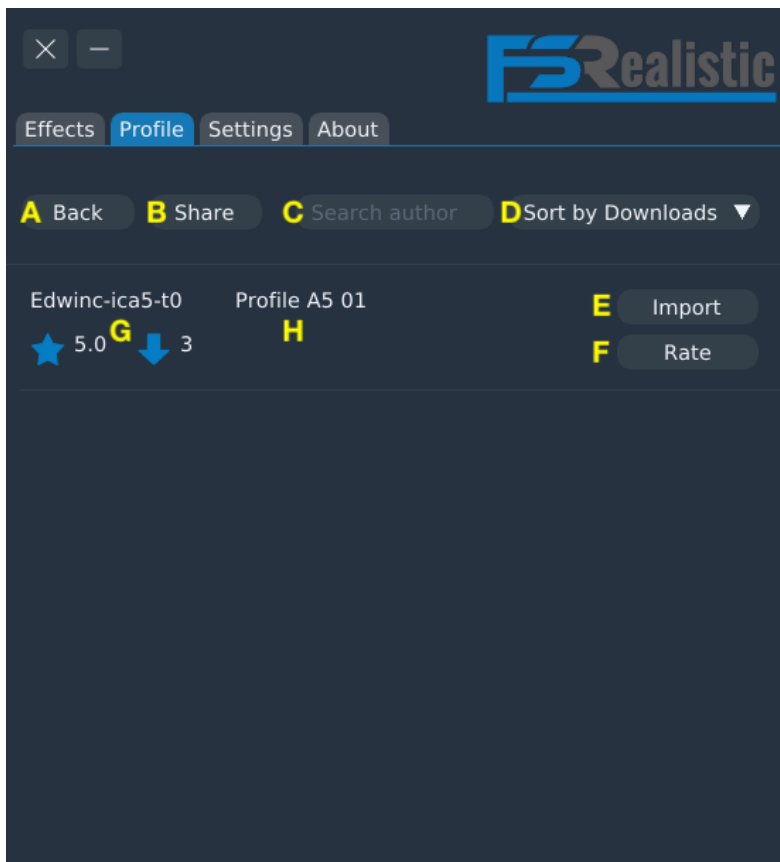
## Tabs - Profile



- **A** - Name of the active profile, which is the name of the loaded aircraft.
- **B** - Profile master switch, use this to toggle on and off FSRRealistic for this aircraft.
- **C** - Press this button to reset the profile to its default.
- **D** - Link this aircraft to another aircraft's profile
  - For example, you have a profile of C172 and you want to use it with your C182.
  - Any changes that will be made, once linked, will be applied on the linked profile and not on the loaded aircraft profile.
  - To unlink and revert to the aircraft original profile, press "Unlink".
- **E** - Copy a profile of another aircraft
  - For example, you have a profile of C172 and you want to copy it into C182 and then adjust it only for C182.
  - Unlike the link option (**D**), copy saves changes on the loaded aircraft profile only.
- **F** - Profile cloud, once you feel comfortable with the adjustments you've made on a specific aircraft profile, you are more than welcome to share it with the community. At the same time, you can also look for other profiles to download.



## Profile cloud



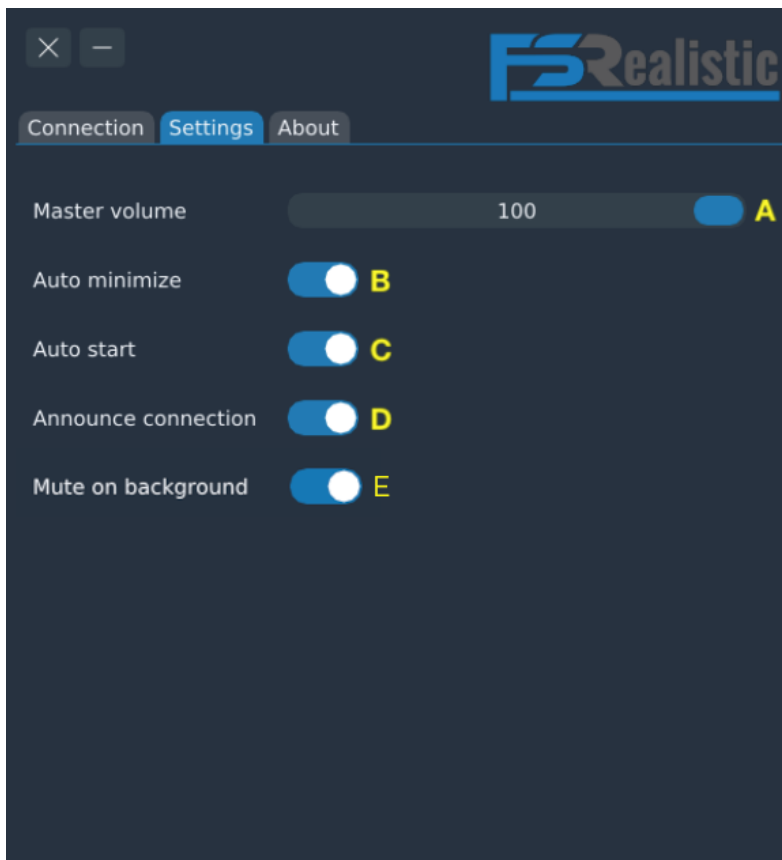
- **A** - Back to profile screen
- **B** - Share your profile with the community
- **C** - Search for a shared profile by author name
- **D** - Sort shared profiles by downloads / rating / author name
- **E** - Press to import and use this shared profile
- **F** - Press to rate this shared profile (1-5 stars)
- **G** - Rating and downloads count of this shared profile
- **H** - Shared profile description

### Note

- You can share up to one profile per aircraft.
- If you re-share a profile, this will overwrite the original shared profile of yours.



## Tabs - Settings



- **A** - FSRealistic master volume slider.
- **B** - Toggle this on, if you want FSRealistic to auto minimized on start (on by default).
- **C** - Toggle this on, if you want FSRealistic to auto start with MSFS (on by default).
- **D** - Toggle this on, if you want to hear the “FSRealistic connected” announcement when FSRealistic establishes a connection with MSFS.
- **E** - Toggle this on, if you want FSRealistic to be muted when MSFS is in the background.
- **F** - Toggle this on, if you like the camera movements to freeze anytime your mouse is moving.
- **E** - Press this to reset camera to default position.





# Troubleshoot

## 1 - FSRealistic is not running at all

- When FSRealistic is not running at all, one of the two options can help
  - Install C++ libraries, download from here:
    - [https://aka.ms/vs/16/release/VC\\_redist.x64.exe](https://aka.ms/vs/16/release/VC_redist.x64.exe)
  - Make sure no Antivirus software is blocking it from running
  - Make sure the full path to your FSRealistic folder contains only English letters
  - If none of the above helped, please contact us.

## 2 - Whenever I try to activate I get “Invalid key”

- In some countries, fsrealistic.com may be blocked for unknown reasons. This may lead to the activation to fail with an error of “Invalid Key”. To work around this issue, please use a VPN connection to be able to load fsrealistic.com.
- In case you need help doing that, please contact us.

## 3 - Aircraft profiles always reset to default

- Make sure FSRealistic folder has a folder named “Profiles”.

## 4 - Auto start is on, but FSR won't auto start

- Start by trying to run MSFS as administrator (right click on MSFS).
- Install FSRealistic in a different place than Program Files.
- Make sure no antivirus is blocking FSRealistic.
- If none of the above helped, please contact us.

## 5 - I get spikes and lags when using FSRealistic

- Go to FSRealistic folder, open Data folder, using text editor open the file “config.json” and add to the json the following text:
  - "legacy\_vibrations": false
- Save the file and reload FSRealistic.

## 6 - I cannot find the “Effects” tab

- In order to see the effects tab you'll need to start a flight.
- In case you have started a flight and still cannot see the effects tab, please contact us.